



Makepeace Mansions, Makepeace Avenue, Highgate, N6

£595,000

Leasehold



44 highgate high street, highgate village, london, n6 5hx

telephone 020 8348 8000 facsimile 020 8348 8232

email highgate@litchfields.com web litchfields.com

offices also in hampstead garden suburb





We are pleased to offer this spacious second floor flat in a very handsome 1920s purpose-built apartment block in an enviable location within the private, gated Holly Lodge Estate. Presented in good condition throughout, this super apartment features a light filled, south facing reception room, with French doors on to a balcony offering stunning views over Hampstead Heath and the London skyline. There are two double bedrooms, both with built-in storage, family bathroom and fully a fitted kitchen. Further benefits include beautiful communal gardens and resident street parking. Makepeace Mansions is very conveniently located a stone's throw from all the amenities of Swains Lane and within easy reach of historic Highgate Village, transport links to central London and the City and the lovely green spaces of Waterlow Park, Kenwood and Hampstead Heath. It is also within the catchment area of highly regarded local schools. Long Lease and Chain Free. EPC- D.



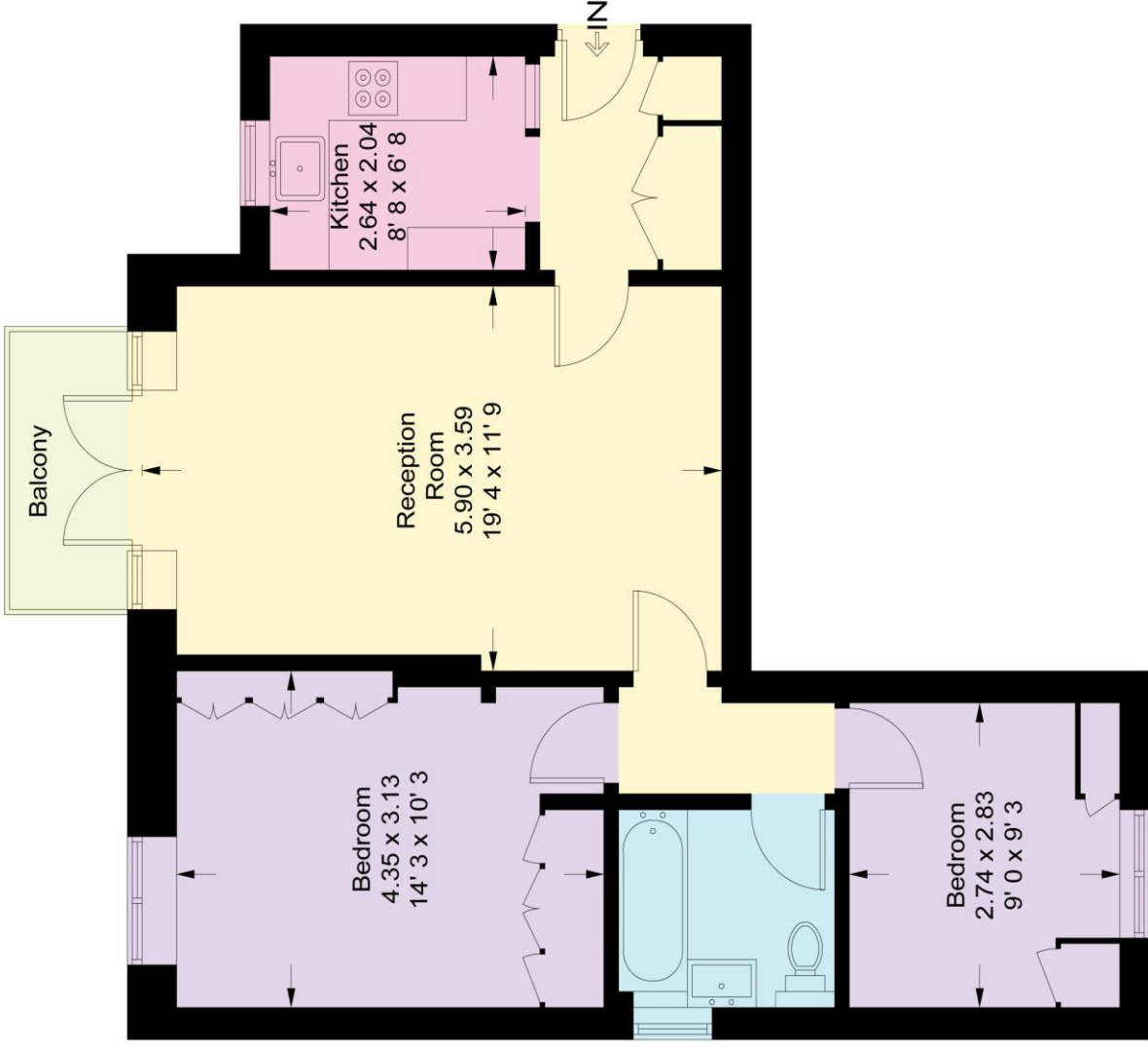


Elegant 1920s Purpose-Built apartment block
Second floor flat
Sunny south facing reception room
Balcony with stunning views to London skyline
2 double bedrooms
Family bathroom
Kitchen
Communal gardens
Resident parking
Stone's throw to local amenities on Swains Lane
Close to transport links, green spaces & great local schools
Long Lease & Chain Free
EPC - D



Makepeace Mansions

Approximate Gross Internal Area = 640 sq ft / 59.5 sq m



Second Floor

This plan is not to scale and must be used as layout guidance only. All measurements and areas are approximate and should not be relied upon to provide accurate information. This plan must not be relied upon when making property valuations, design considerations or any other such relevant decisions. We accept no responsibility or liability (whether in contract, tort or otherwise) in relation to any loss whatsoever arising from or in connection with any use of this plan or the adequacy, accuracy or completeness of it or any information within it.